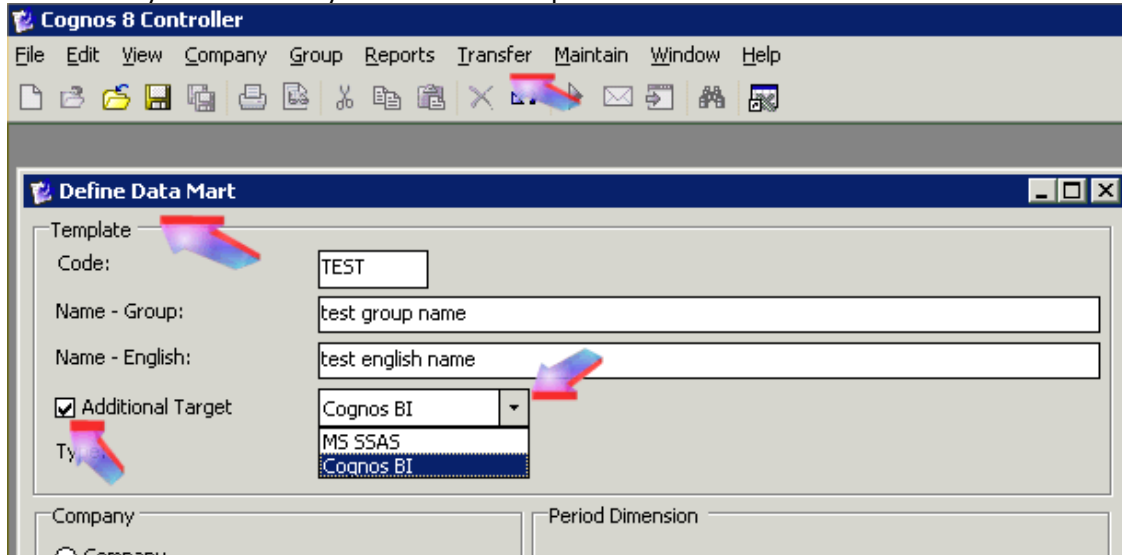


How to use the 'DmConv' tab inside Controller Configuration to publish CognosBI Data Mart

Overview

Controller 8.2 and 8.3 can publish data to 3 different types of 'Data Mart'. You must select one of these when you first define your Data Mart template:



1) Additional Target = 'none' (unticked)

- This publishes data to the same RDBMS database which holds the Controller application data.
- In other words, it publishes Data Mart data to new tables inside the existing Controller application database repository.

2) Additional Target = 'MS SSAS'

- This publishes data to an OLAP cube, which resides on a Microsoft MSAS (Analysis Services) server.
- In other words, it publishes Data Mart data to a separate 'OLAP' server, ready for 'slicing and dicing'.

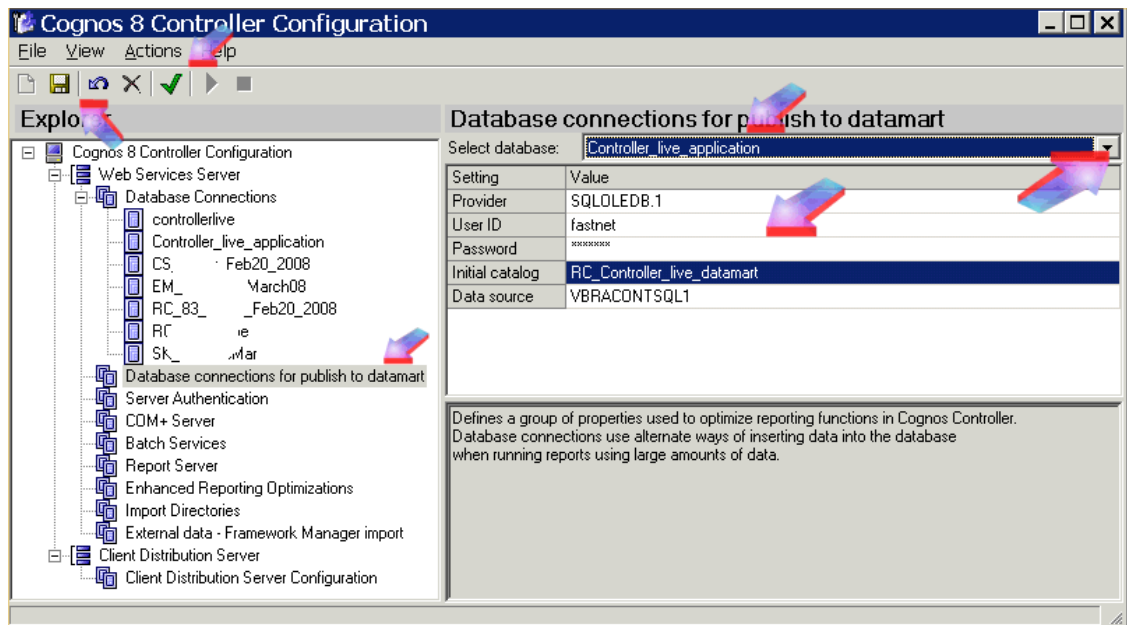
3) Additional Target = 'Cognos BI'

- This publishes data to a *different* (separate) RDBMS database (different from the Controller application data database).
- In other words, it publishes Data Mart data to new tables inside a completely separate/unconnected database.
 - This "data mart" database may even be located on a completely separate/different server (e.g. different SQL server) from the one which hosts the Controller application repository database!
- Typically (in most scenarios) a customer would have a separate "Cognos BI" RDBMS target data mart database for each 'application repository' database
 - For example, for repository database 'Controller_live' you would have a corresponding Data Mart database 'Controller_live_datamart'
 - For 'Controller_test' you would have a 'Controller_test_datamart' database

This document will simply demonstrate the steps involved in configuring the application server, before you will be able to use (3).

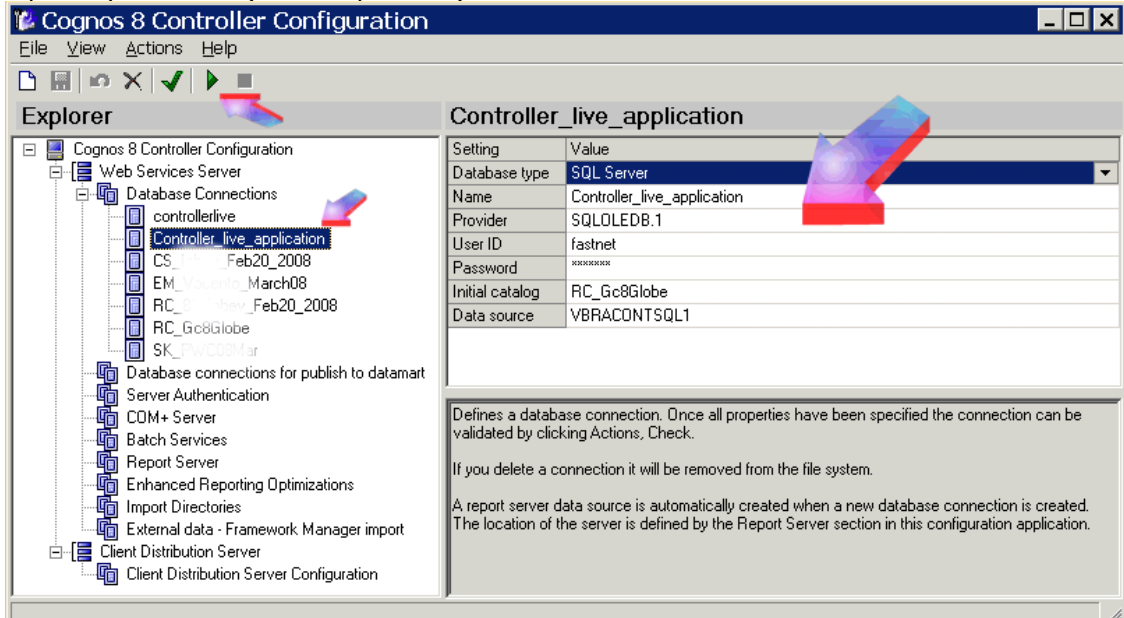
Details

- Logon to the [database server](#) as an Administrator
- Create a new database
 - In my demonstration, I have named this 'RC_Controller_live_datamart'
- Logon to Controller [application server](#) as an Administrator
- Launch Cognos 8 Controller Configuration from the Start Menu
- Select 'Database connections for publish to datamart'
- Use the 'select' drop-down menu to choose the relevant database (e.g. 'Controller_live_application')
- Fill in the details to connect to your 'data mart' database (e.g. 'RC_Controller_live_datamart')
- Click the green 'tick' to test
- Click the 'save' icon



- Now click on 'Database Connections'

In my example, my 'connection name' is "Controller_live_application" and the 'application repository' database (that this points to) is called 'RC_Gc8Globe':



Typically (in most scenarios) a customer would have a separate "Cognos BI" RDBMS target data mart database for each 'application repository' database

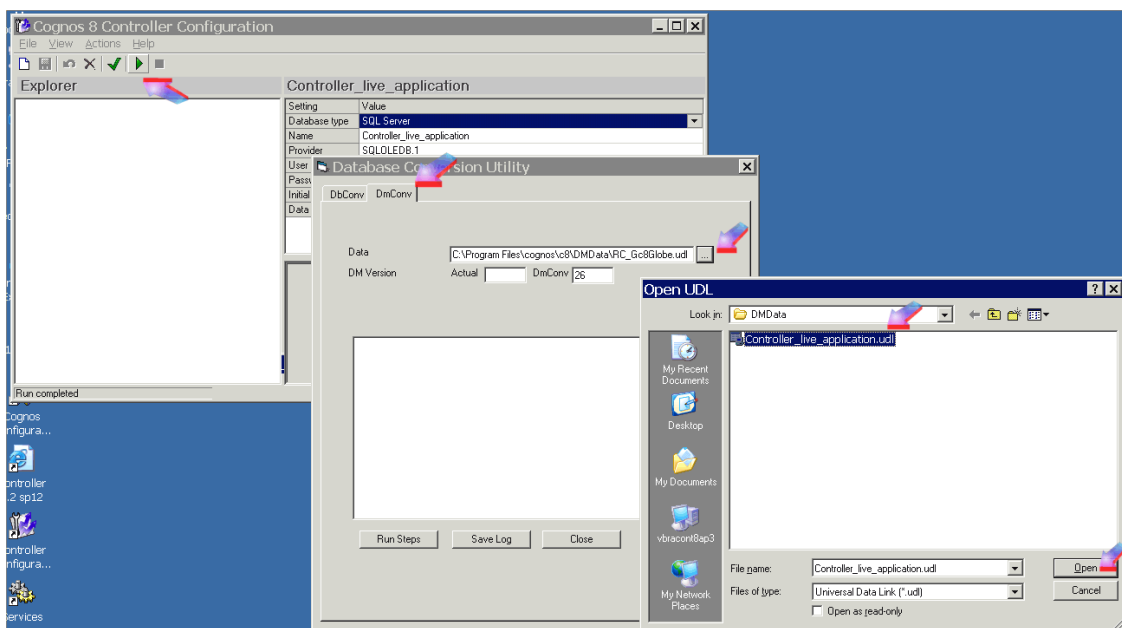
- For example, for repository database 'Controller_live' you would have a corresponding Data Mart database 'Controller_live_datamart'
- For 'Controller_test' you would have a 'Controller_test_datamart' database

- Highlight the relevant database connection
 - In this case, it is 'Controller_live_application'
- Click on the green 'play' button
- Click on the 'DmConv' tab
- Click on the browse ("...") button and locate the UDL file that we created earlier

TIP: By default, these UDL files are located inside:

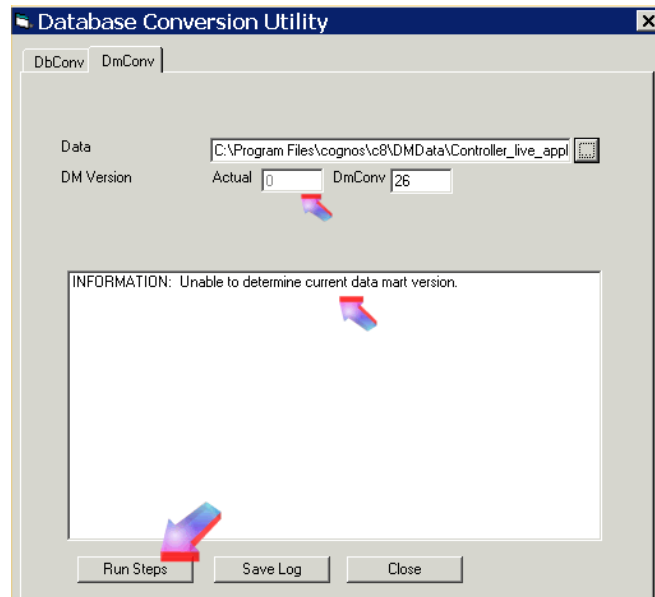
C:\Program Files\cognos\c8\DMData

WARNING: Make sure that you do not accidentally select the wrong data mart UDL (or choose one that exists inside the application repository folder "C:\Program Files\cognos\c8\Data")

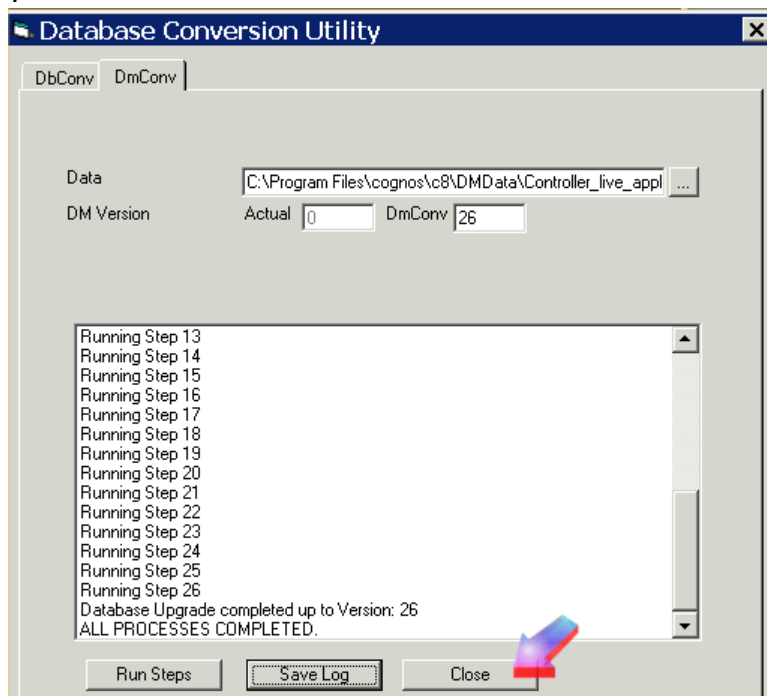


- Click 'Open'

- For a brand-new (blank) Data Mart, the 'DM version' will be zero (0):



- Click on 'Run Steps' to bring the number up to the same number as displayed inside 'DmConv':

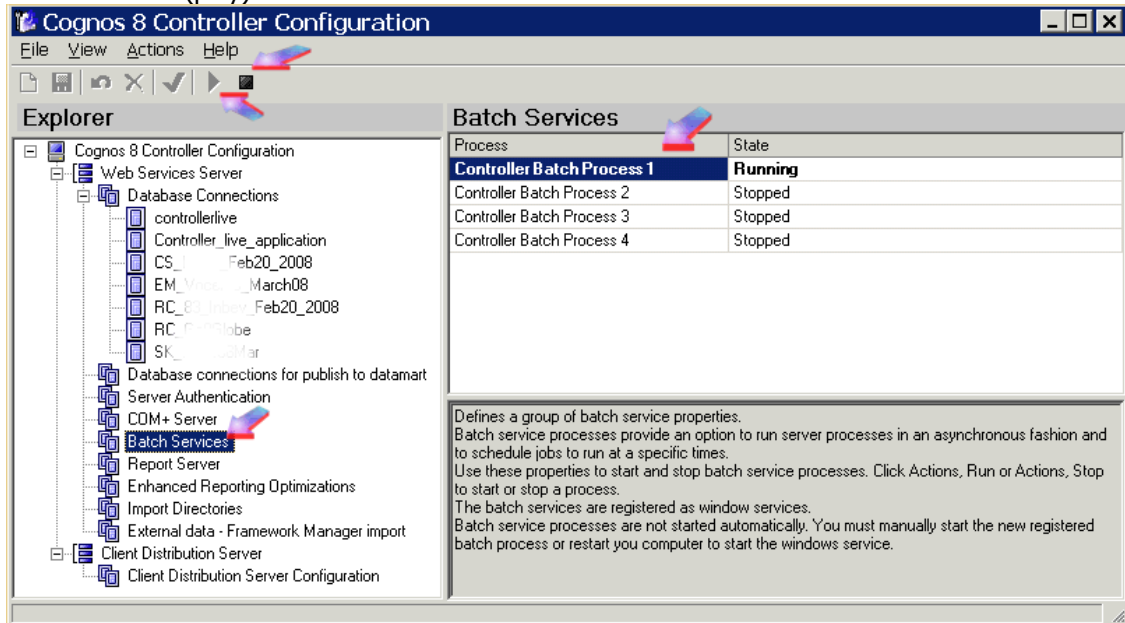


- Click 'Close' when this is finished

Finally, although we have created the Data Mart, the Controller server system will **not** be able to use it until the Batch Server service is restarted.

Therefore:

- Obtain a short period of downtime (no users on system)
- Click 'Batch Services'
- Highlight 'Controller Batch Process 1'
- Click 'stop' icon
- Wait 5 seconds
- Click 'start' (play) icon



Test!